



**PRODUCT
MANAGEMENT**
COMMUNITY OF PRACTICE

MIT
MANAGEMENT
SLOAN SCHOOL

Hello PM CoP Community,

We're excited to share a quick update on the **MIT Sloan Product Management Community of Practice (PM CoP)**. Momentum is real and growing!

Building Momentum Together

Since launching in July 2025, the PM CoP has grown from **35 to 120+ members** across alumni, students, faculty, and staff. A testament to MIT Sloan's PM Ecosystem and the PM thought leaders. Our goal this year: **200 engaged alumni**. Help us make this happen! If you know someone who should be part of our community, please invite them to [learn more](#).

We're building a true community of PM leaders who are committed to the evolving practice of product management. The PM CoP offers events AND opportunities for learning, shared experiences, and leadership to flow across career stages, industries, and generations.

A Note of Gratitude

We extend our deepest thanks to the Alumni PM CoP Leader - Dev Bala, the PM CoP Alumni Steering Committee members - past and present, community speakers, mentors, and contributors whose leadership and generosity have brought this

community to life. Through alumni leadership, thought partnership, and hands-on support as interview mentors and classroom speakers in the upcoming PM Lab and Intro to PM courses, you have shaped a PM CoP that meaningfully connects alumni insight with student learning.

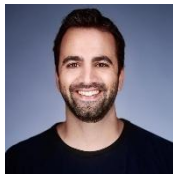
Our alumni leaders and contributors are as follows:



Shaked Aviv Ben Aharon



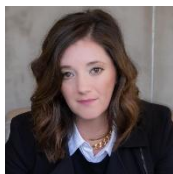
Dev Bala



Mosh Ben-Giat



Leon Bian



Rachel Card



Ariel Dos Santos



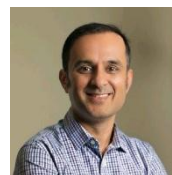
Shani Fargun



Nikhil George



Phil Gerity



Dhruv Mehrotra



Ravi Mehta



Boris Nicolas



Tilak Palanisamy



Eglae Recchia



Anar Shah



Alex Shih



Ryan Stirling



Mikesh Vora

Your time, insight, and commitment to building something lasting have made a real difference, and we are grateful for the leadership and care you continue to bring to this community.

And we want to acknowledge the growing partnership with our student leaders. Shout out to our students:



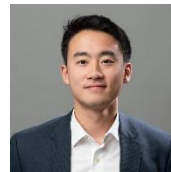
Eric Chiang



Ian Go



Shreya Singhal



Eric Wang



Sarah Yae

What's Coming Up

Join us for our upcoming event:

MIT Sloan Product Management Community of Practice

Product Leadership in the AI Era: How PM Competencies, Strategy, and Careers Are Evolving

 **Dhruv Mehrotra**
MBA '10

 **Ravi Mehta**
MBA '06

Monday, February 9 | Virtual

12-1pm Eastern Time / 9-10am Pacific Time

PRODUCT MANAGEMENT COMMUNITY OF PRACTICE | MIT MANAGEMENT SLOAN SCHOOL

Product Leadership in the AI Era: How PM Competencies, Strategy, and Careers Are Evolving

February 9, 2026 | 12-1pm Eastern Time / 9-10am Pacific Time | Virtual

In this fireside chat, Dhruv Mehrotra will talk to Ravi Mehta, an accomplished product exec with leadership experiences at Tripadvisor, Tinder, Facebook, Xbox, and Reforge, to explore how the product manager role is evolving in an AI-first world.

[Register!](#)

Where We Need Your Help

- **Host Students During PM Trek / SIP - Coming to NYC:** Our PM students are coming to New York during SIP from **March 15 to 18!** We are looking for alumni to host students at their offices and network with them while they are in town. Please reach out to Rachel Card, XPIR PM Ecosystem at card@mit.edu and Shreya Singhal at shreya21@mit.edu.

- **Hire PM Talent / Just-in-Time Hiring:** If you will be hiring on your team or in your firm for PM roles, we would love to share a resume book. Please email us at askcdo@mit.edu to receive a copy.

Help Shape What's Next

- **Join the PM CoP on LinkedIn:** If you haven't yet joined, now is a great time to grow alongside this community.
- **Contribute to the PM CoP:** If you're interested in sharing your expertise or perspective, speaking at an upcoming event, and adding to our community's knowledge, reach out to Shauna LaFauci Barry at shauna@mit.edu to start the conversation.
- **Tell Us What Would Elevate Your PM Craft:** Share the programming, content, and experiences that would help you grow as a PM and shape offerings that elevate the PM craft across industries and career stages. You're welcome to share ideas by emailing Shauna LaFauci Barry at shauna@mit.edu.

We're excited about the momentum we're seeing, and even more excited about what we can continue to build together as a community grounded in practice, generosity, and shared learning.

Thank you for being part of the PM CoP community.

Warm regards,

PM CoP Team

Gayle Grader, Shauna LaFauci Barry, Becky Farone, Dev Bala, Rachel Card, and Charlie Fine